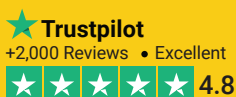




PrimeX Signals Center Guide



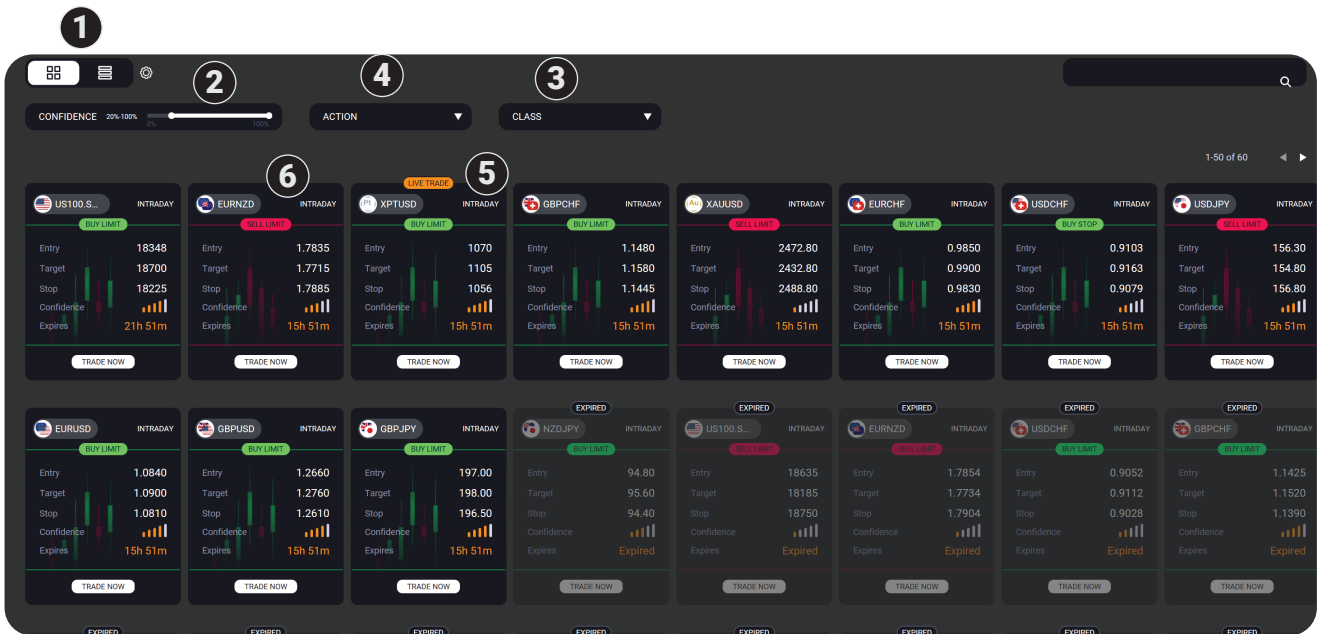
Regulated by  FSCA

www.primexbroker.com



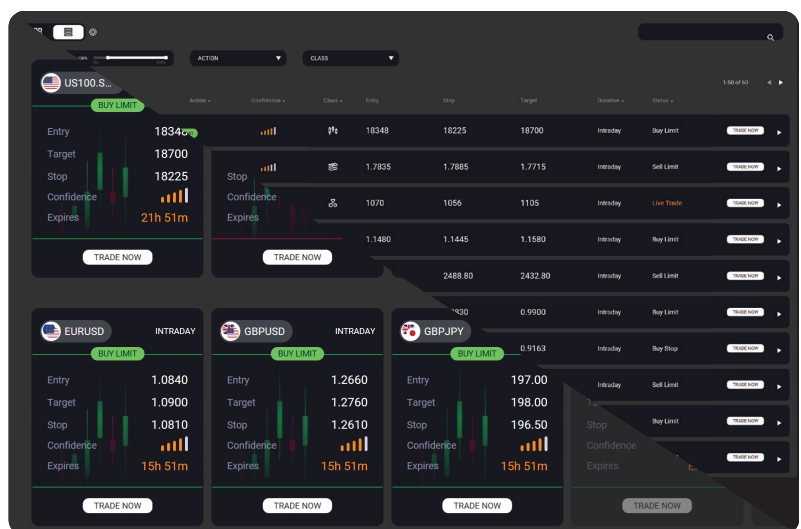
How to Navigate the Signals Center on your MT5

All the current and recently expired Trade Ideas published are listed on the signals center tool on Metatrader 5



Key for Reference

- 1 Choose between Tab or List View
- 2 Confidence rating filter
- 3 Asset Class filter
- 4 Current Trade Idea status selector
- 5 Current status of Trade Idea
- 6 Red / Green colours used to quickly identify Buy / Sell opportunities





How to Select a Trade

You can select a Trade Idea directly from the homepage by clicking on the tile on the Tab View or line on the List View. Alternatively, refine your selection by using one of the several filters available. These include:

Confidence

The Confidence bar allows you to filter Trade Ideas between 0% and 100% confidence.



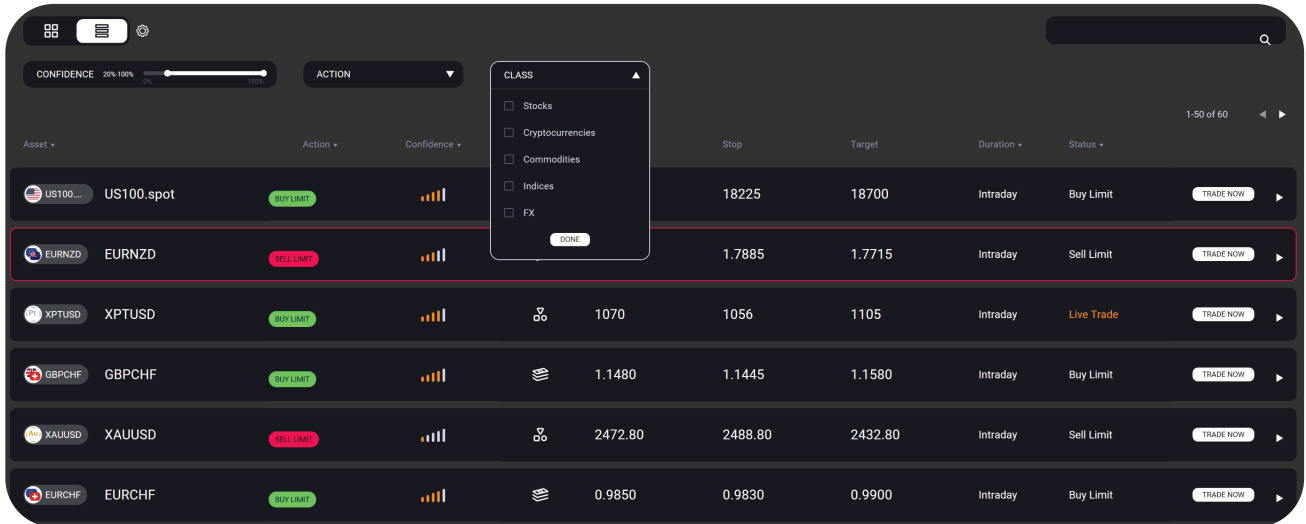
This rating is a rating score, calculated using a proprietary formula. Includes trend, analyst performance and sentiment analysis data.

Asset	Action	Confidence	Class	Entry	Stop	Target	Duration	Status
US100.spot	BUY LIMIT	80%	FX	18348	18225	18700	Intraday	Buy Limit
EURNZD	SELL LIMIT	80%	FX	1.7835	1.7885	1.7715	Intraday	Sell Limit
XPTUSD	BUY LIMIT	80%	COM	1070	1056	1105	Intraday	Live Trade
GBPCHF	BUY LIMIT	80%	FX	1.1480	1.1445	1.1580	Intraday	Buy Limit
XAUUSD	SELL LIMIT	80%	COM	2472.80	2488.80	2432.80	Intraday	Sell Limit
EURCHF	BUY LIMIT	80%	FX	0.9850	0.9830	0.9900	Intraday	Buy Limit
USDCHF	BUY STOP	80%	FX	0.9103	0.9079	0.9163	Intraday	Buy Stop
USDJPY	SELL LIMIT	80%	FX	156.30	156.80	154.80	Intraday	Sell Limit
EURUSD	BUY LIMIT	80%	FX	1.0840	1.0810	1.0900	Intraday	Buy Limit
GBPUSD	BUY LIMIT	80%	FX	1.2660	1.2610	1.2760	Intraday	Buy Limit



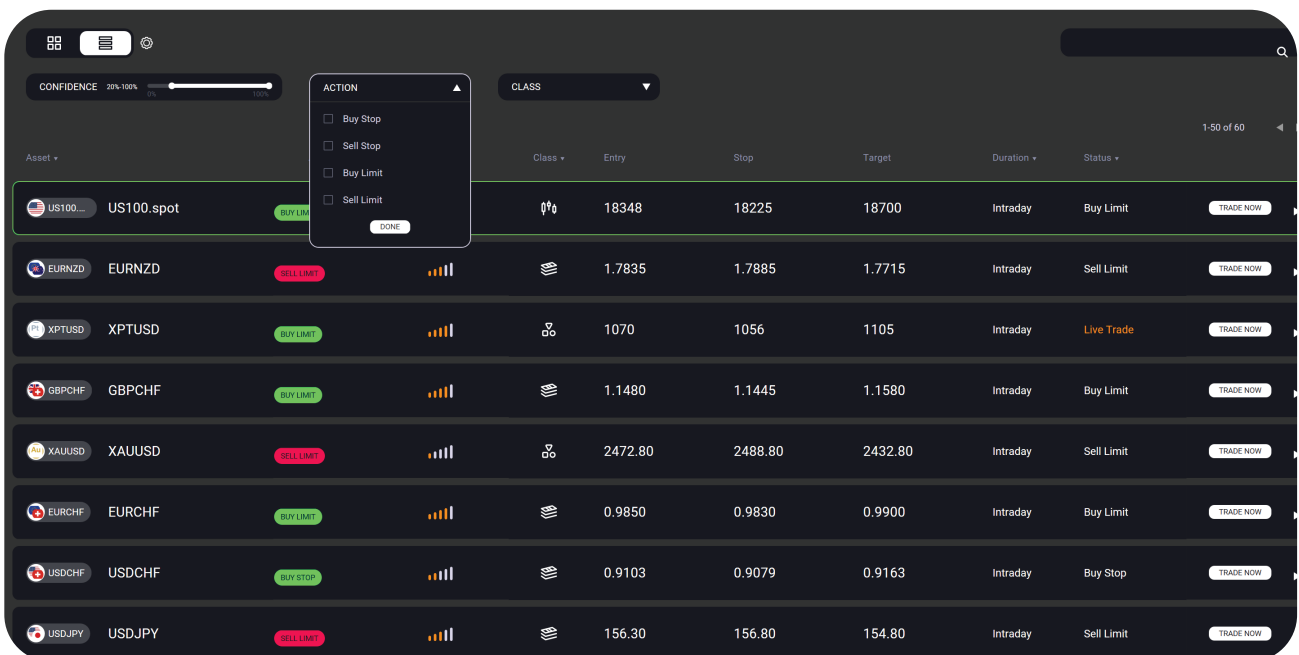
Class

The Class tab allows traders to filter by the type of asset they are most interested in. Choose from All, FX, Commodities, Indices, Cryptocurrencies or Stocks.



Status

This filter allows the trader to select a Trade Idea based on its current status. The status is updated throughout the day as the Trade Idea progresses.





Traders can select Trade Ideas from the following:

All	Displays all Trade Ideas
Expired	If the Trade Idea has not performed within the expiry time the status will change to 'Expired' and the tab or line item will be greyed out.
Sell / Buy Limit Shop	Depending on the type of signal, it will be labelled as one of the following categories: Sell Limit Pending order showing level above to open a short position Sell Stop Pending order showing level below to open a short position Buy Limit Pending order showing level below to open a long position Buy Stop Pending order showing level above to open a long position
Live Trade	If the price reaches its entry level the signal status will be changed to 'Live Trade'. Once the trade is live, we want to see the price reach the first target level and ideally the second target level.

Understanding the Trade Idea

Each Trade Idea on the homepage displays key information about the trade to help you time your entry and exit positions. By clicking on the Trade Idea more details are revealed including additional data sets and the strategy behind each trade.

Status & Key Levels

Use the key levels to understand the parameters of the Trade Idea - where our analysts are looking to enter the trade, where to target and where they will place their stop loss.

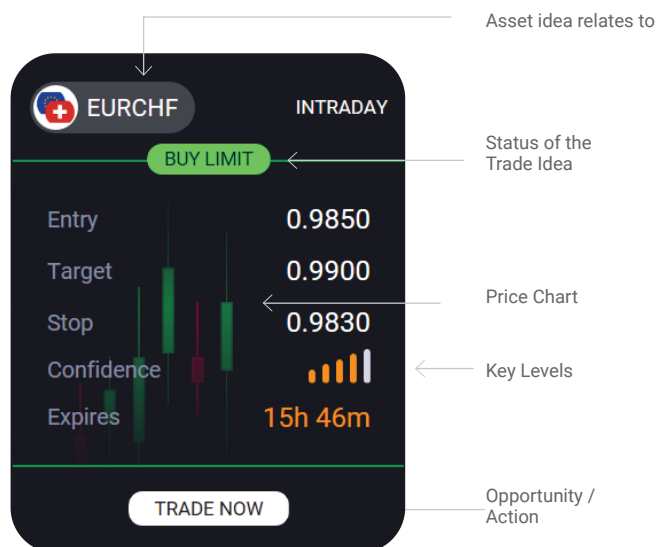
The status of the Trade Idea will change as the trade progresses throughout the day, determined by the target levels set.



Buy Signals

- 1 Entry Level** if the trade meets the entry level, the status will change to 'Live'
- 2 Stop Level** if the trade goes live but the price drops to the stop level, the trade will close and the status will be updated to 'Closed - Loss'.
- 3 Target Level** if the trade goes live and the price reaches the Target Level, the status will be updated to 'Closed - Profit'.

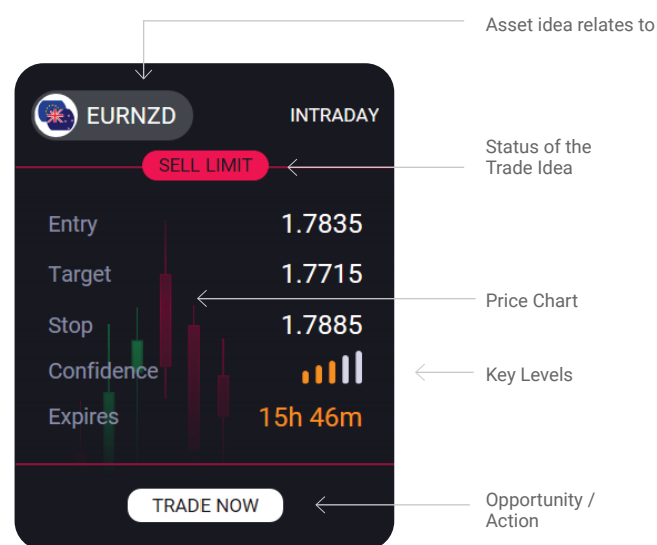
If the trade does not meet the entry level and does not go live, the status will be updated to 'Expired'.

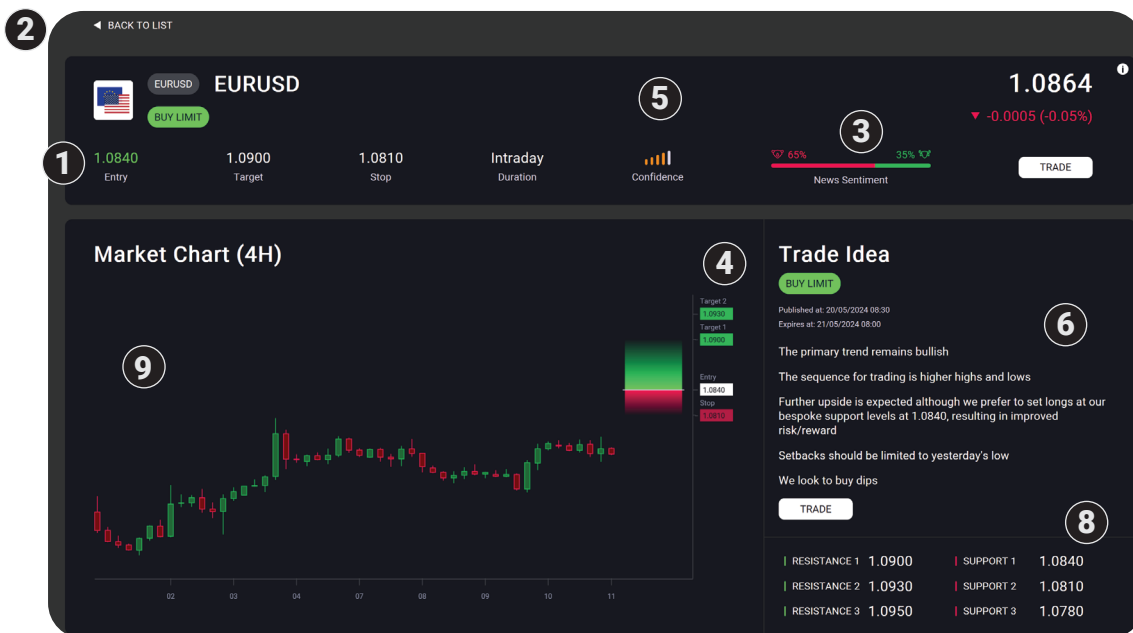


Sell Signals

- 1 Entry Level** if the trade meets the entry level, the status will change to 'Live'.
- 2 Stop Level** if the trade goes live but the price rises to the stop level, the trade will close and the status will be updated to 'Closed - Loss'.
- 3 Target Level** if the trade goes live and the price drops to the Target Level, the status will be updated to 'Closed - Profit'.

If the trade does not meet the entry level and does not go live, the status will be updated to 'Expired'.





- 1 **Current Asset Price** This is the price of the asset at the time the Trade Idea was published.
- 2 **Back to List** Link back to all Trade Ideas.
- 3 **News Sentiment Score** this score reflects how the global investment community currently feels about the asset. It is measured by analysing millions of news articles every day using AI technology.
- 4 **Target Levels** Determine Trade Idea effectiveness.
- 5 **Confidence Rating** This is an analyst's rating score, calculated using a proprietary formula based on multiple criteria.
- 6 **Trade Idea** Analyst Trade Idea & corresponding strategy.
- 7 **Next Volatility Events** Upcoming events likely to affect the asset and signal.
- 8 **Levels** Key support and resistance levels that will affect the Trade Idea.
- 9 **Chart** Current price chart

Timeframes

Published / Expiry Dates and Times

We publish reports across three global timeframes.

Region / Asset	Publish Time	Expiry Time
European Session	06.30 (GMT)	21.00 (GMT)
US Session	12.30 (GMT)	21:00 (GMT)
Cryptocurrencies	12.30 (GMT)	+1 day 12:30 (GMT)
Asian Pacific Session	15.30 (GMT)	+1 day 15:30 (GMT)

Trade Idea

Signal Centre employs experienced and fully qualified technical analysts who use their skill and expertise to formulate good risk/reward Trade Ideas.

Each signal provides detail on the rationale for the trade, allowing users to develop a better understanding of technical analysis and educating users in their trading journey.



Risk/Reward Scale

Each trade displays the risk and potential reward. All Trade Ideas published have a risk/reward ratio in excess of 2:1, sometimes this can be even as much as 5:1.



Price Chart

The chart displays current price data and data from the past 7 days. Each candle represents 4 hours of price action.

On the right hand axis, the red and green scale is a visual guide that shows the potential gain and losses of the signal. Use these to monitor the price activity within the key levels set out.

Support & Resistance Levels

These are the levels deemed to be significant for that asset. This could be a trend line, Ichimoku Cloud level or perhaps a Fibonacci level. These levels indicate where buyers and sellers could emerge on both the downside and the upside.

Next Volatility Events

These are the events taking place during the time frame of the trade that are likely to impact market activity and have the potential to increase volatility. Our analysts will be keeping a watchful eye on the data arising from these events and will update the signal accordingly.

Signal Status

This is the current status of the signal. [See notes above.](#)